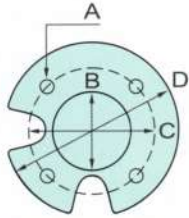


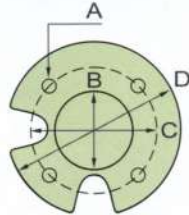
# AB Series 50HZ

## 14" STAINLESS STEEL SUBMERSIBLE PUMPS FOR DEEP WELLS



A:  $\phi$  14.68mm  
 B:  $\phi$  76.15mm  
 C:  $\phi$  111.0mm  
 D:  $\phi$  137.0mm

**6" MOTOR**

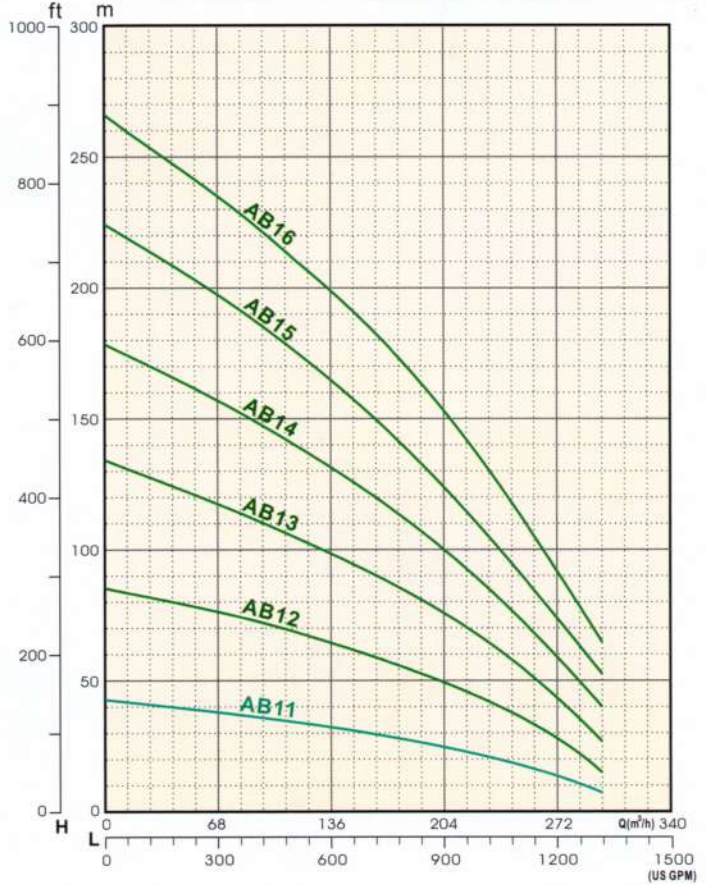


A:  $\phi$  19.0mm  
 B:  $\phi$  127.0mm  
 C:  $\phi$  152.4mm  
 D:  $\phi$  195.5mm

**8" MOTOR**



### PERFORMANCE CURVES



### SPECIFICATION

TYPE	STAGES	MOTOR		DIMENSION			HEAD(M). CPACITY(GPM)				WEIGHT (kg)	
		KW	HP	L	L1	L2	STANDER		MAX			
							H	C	H	C		
14"	AB 11	1	18.5	25	506	278	245	28	780	43	1320	44
	AB 12	2	37.5	50	682	278	245	56	780	86	1320	64
14"	AB 13	3	60	80	858	278	245	87	780	134	1320	84
	AB 14	4	90	120	1034	278	245	113	780	178	1320	104
	AB 15	5	105	140	1210	278	245	142	780	225	1320	124
	AB 16	6	120	160	1386	278	245	174	780	266	1320	144