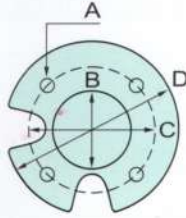


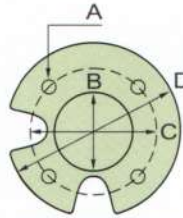
# AS Series 50HZ

## 8" & 10" STAINLESS STEEL SUBMERSIBLE PUMPS FOR DEEP WELLS



A:  $\phi$  14.68mm  
 B:  $\phi$  76.15mm  
 C:  $\phi$  111.0mm  
 D:  $\phi$  137.0mm

**6" MOTOR**

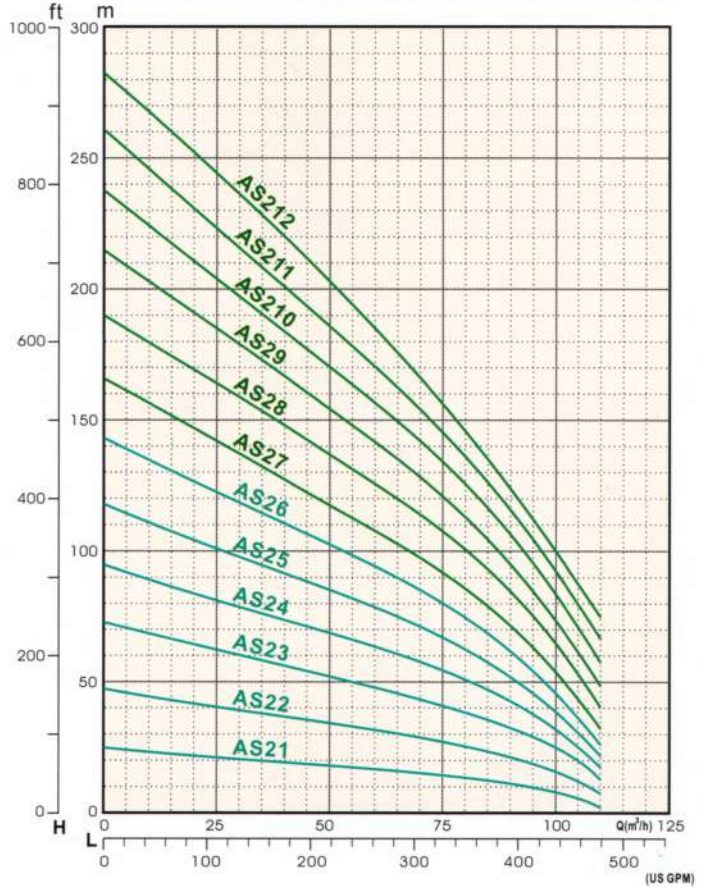


A:  $\phi$  19.0mm  
 B:  $\phi$  127.0mm  
 C:  $\phi$  152.4mm  
 D:  $\phi$  195.5mm

**8" MOTOR**



### PERFORMANCE CURVES



### SPECIFICATION

TYPE	STAGES	MOTOR		DIMENSION			HEAD (M) . CPACITY (GPM)				WEIGHT (kg)	
		KW	HP	L	L1	L2	STANDER		MAX			
							H	C	H	C		
8"	AS 21	1	7.5	10	320	175	165	16	260	25	480	18
	AS 22	2	11	15	440	175	165	32	260	48	480	25
	AS 23	3	15	20	560	175	165	48	260	73	480	33
	AS 24	4	18.5	25	680	175	165	64	260	95	480	40
	AS 25	5	22	30	800	175	165	78	260	118	480	47
	AS 26	6	30	40	920	175	165	94	260	143	480	54
10"	AS 27	7	33.5	45	1164	210	165	109	260	166	480	64
	AS 28	8	42	55	1286	210	165	126	260	191	480	71
	AS 29	9	45	60	1408	210	165	142	260	214	480	78
	AS 210	10	53	70	1530	210	165	157	260	237	480	85
	AS 211	11	55	75	1652	210	165	170	260	262	480	93
	AS 212	12	55	75	1774	210	165	185	260	283	480	100