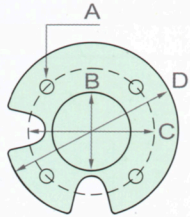


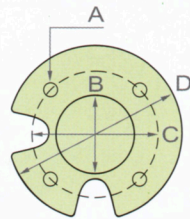
BD Series 50HZ

12" STAINLESS STEEL SUBMERSIBLE PUMPS FOR DEEP WELLS



A: ϕ 14.68mm
 B: ϕ 76.15mm
 C: ϕ 111.0mm
 D: ϕ 137.0mm

6" MOTOR

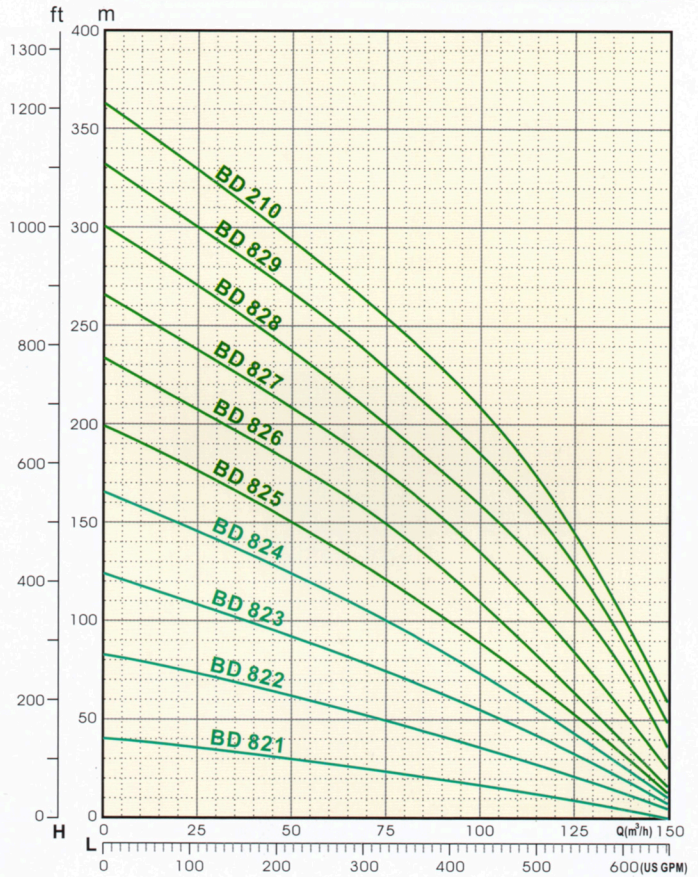


A: ϕ 19.0mm
 B: ϕ 127.0mm
 C: ϕ 152.4mm
 D: ϕ 195.5mm

8" MOTOR



PERFORMANCE CURVES



SPECIFICATION

TYPE	STAGES	MOTOR		DIMENSION			HEAD(M).CAPACITY(GPM)				WEIGHT (kg)	
		KW	HP	L	L1	L2	STANDER		MAX			
							H	C	H	C		
12"	BD 821	1	7.5	10	413	210	205	26	300	41	650	31
	BD 822	2	15	20	496	210	205	52	300	83	650	38.7
	BD 823	3	22.5	30	579	210	205	80	300	124	650	46.4
	BD 824	4	30	40	662	210	205	108	300	165	650	54.1
12"	BD 825	5	37.5	50	745	210	205	132	300	200	650	61.8
	BD 826	6	45	60	828	210	205	160	300	233	650	69.5
	BD 827	7	55	75	911	210	205	185	300	265	650	77.2
	BD 828	8	75	100	994	210	205	215	300	300	650	84.9
	BD 829	9	90	120	1077	210	205	245	300	335	650	92.6
	BD 810	10	105	140	1160	210	205	270	300	365	650	100.3